

STREET RAILWAY JOURNAL



COLUMBUS THE CONVENTION CITY

Columbus, the capital city of Ohio, is in the geographical center of the State and practically in the center of population of the United States. The population is upwards of 150,000, and although the city has no water transportation facilities its commercial and manufacturing development has been remarkable. Its growth is due in no small measure to its electric interurban and its steam railroad connections. Eight interurban systems radiate from the city and twenty-one railroad systems now have entrance here, placing the community in direct touch with the surrounding territory in all directions. Within a night's ride are Chicago, Detroit, Buffalo, New York, Philadelphia, Washington and St. Louis, and within the range of a smaller circle are Cleveland, Pittsburg, Wheeling, Cincinnati, Indianapolis and the entire Ohio, Indiana and Southern Michigan districts.

Columbus is in close touch with the great coal fields of the Central West and is the shipping point for many of the important clay and ore fields in the district.

The excellent railroad shipping facilities have attracted many important manufacturing and industrial establishments, the city being noted for its products of heavy machinery, road scrapers, shoes, dairy products, uniforms, church and lodge room furnishings, proprietary medicines, buggies, wagons, etc.

The city is a place of level streets, the absence of grades having no little bearing on the street railway situation, as well as on the commercial development of the community, as the absence of grades materially reduces the cost of transportation and of trucking.

There are twenty-two banks in Columbus, including six national banks, and these banking institutions are regarded as among the strongest in the country. There are 1,500,000 people who make their homes within two hours' ride of Columbus.

Exclusive of public schools, the city has twenty-six educational institutions, including the Ohio State University, one of the best institutions of learning in the West.

There are seven libraries, and an elaborate Carnegie library and art gallery have just been completed.

The city cares for its feeble-minded, its sick, its poor and its malefactors in asylums, hospitals, alms houses and penitentiaries, which, in architectural features and excellent management, are not surpassed by any city of its size.

The State capitol stands in the centre of the city. Architecturally, the building is famous among the State capitols of the country. The capitol grounds are overrun with

tame grey squirrels—wards of the people of Columbus.

In late years a number of "skyscraper" office buildings have been erected on High and Broad Streets.

The city is said to have more miles of well-laid brick paving than any city of its size in the country.

All the railroads entering Columbus use the Union Station, which is conveniently situated with reference to the hotel and business sections.

Columbus produces fifty newspapers and magazines.

There is an abundant supply of natural gas at low rates, and coal is cheap.

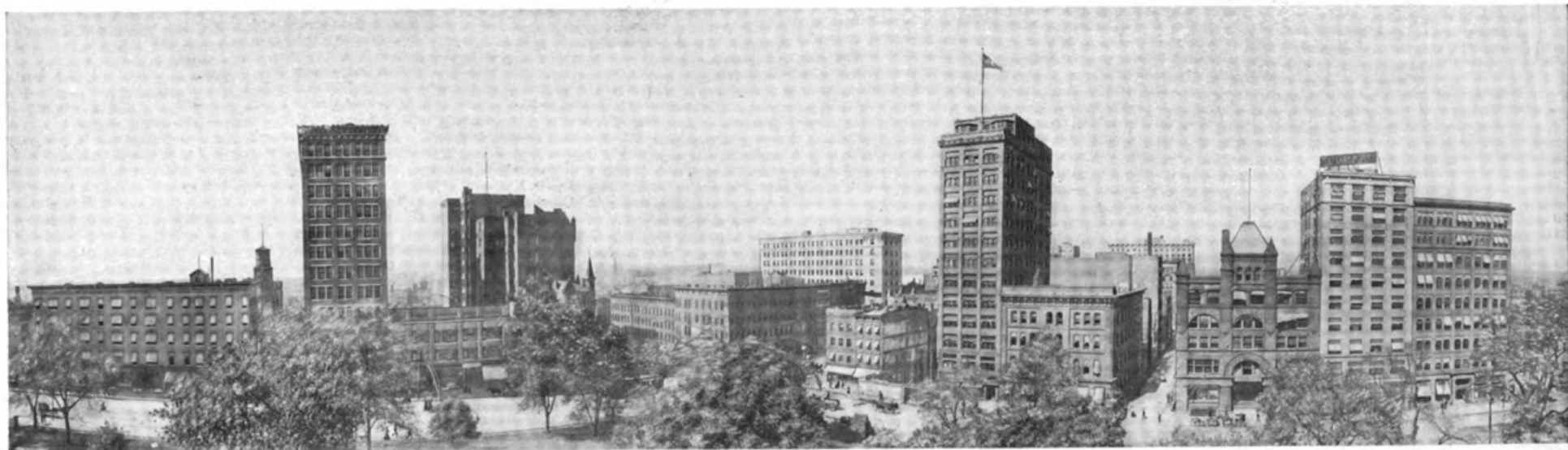
The area of public parks is 196 acres, and, in addition, there are a dozen or more private parks and recreation resorts. One of the most important amusement resorts is Olentangy Park, located on the extreme northern limit of the city. Here are a well-equipped theatre, figure-eight coaster, scenic railway, "Fair Japan," old mill, circle swing, house of mirth, refreshment booths and other attractions. Indianola Park, also in the northern section of the city, in addition to the usual park attractions, has an artificial swimming tank covering an area of 30,000 sq. ft.—a favorite resort in summer. The interurban lines also render accessible a number of parks in the surrounding country, notable among which is Buckeye Lake, on the Columbus, Buckeye Lake & Newark Traction system.

A prominent and unique feature of the city is the method of lighting High Street, which is the main thoroughfare. A series of light steel arches have been erected from curb to curb about every 250 ft., and each arch contains fifty 16-c. p. incandescent lamps. The lamps are placed in a galvanized trough or hood attached to the under side of the arch and running the full length of the span, this hood acting as a reflector to throw the light downward. The lamps project below the edges of the reflector, and at night each individual lamp is visible from a considerable distance, the long stretch of lighted arches giving a peculiarly artistic and pleasing effect.

Columbus was the scene of some of the pioneer experiments in electric traction. In 1887 the late Sydney H. Short, who was born in Columbus and graduated from the Ohio State University, laid down and operated with considerable success an electric line about 2½ miles in length, using the overhead series system of electric traction. From a description published at the time, it appears that "On the trial road at Columbus it requires a 16-hp engine to drive two cars. Each car is 27 ft. long, and, with its load, weighs 10 tons."



PART OF THE MAIN BUILDINGS AT THE FAIR GROUNDS, COLUMBUS



THE SKYLINE ALONG HIGH STREET, COLUMBUS, LOOKING FROM THE CAPITOL



CORNER HIGH AND GAY STREETS, COLUMBUS



VIEW OF COLUMBUS, LOOKING EAST FROM BROAD AND HIGH STREETS, SHOWING RESIDENTIAL AND INDUSTRIAL SECTIONS



LOOKING NORTH ON HIGH STREET, COLUMBUS, SHOWING SHOPPING DISTRICT



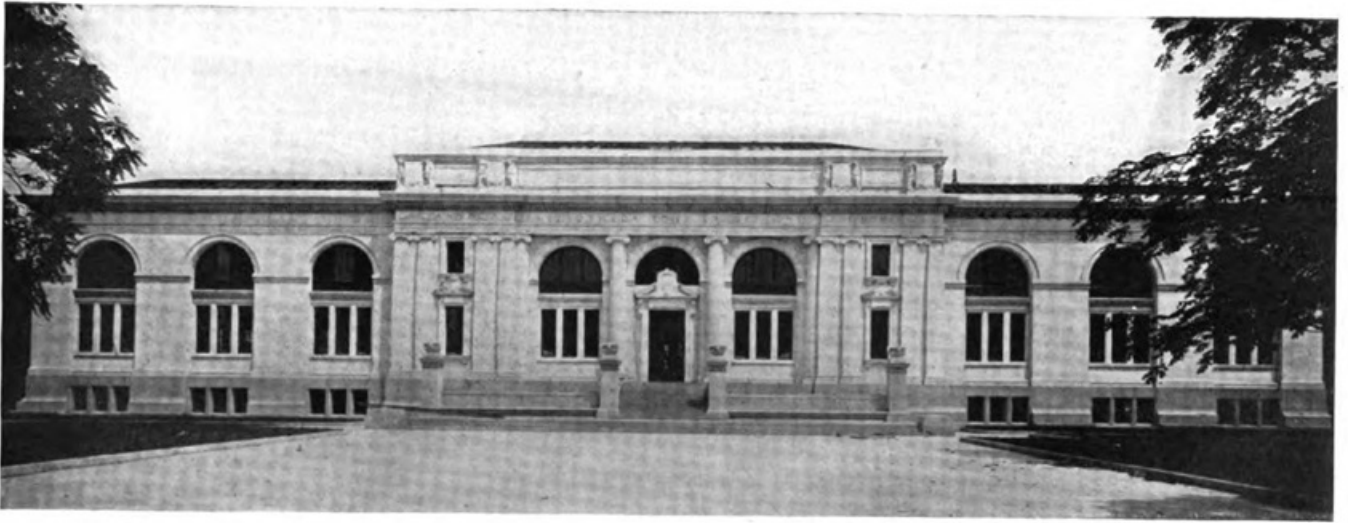
VIEW AT CORNER OF HIGH AND BROAD STREETS, COLUMBUS



THE INTERURBAN UNION STATION IN COLUMBUS AT NIGHT



INTERURBAN UNION STATION ON WEST GAY STREET, COLUMBUS



THE NEW CARNEGIE LIBRARY, EAST BROAD STREET, COLUMBUS



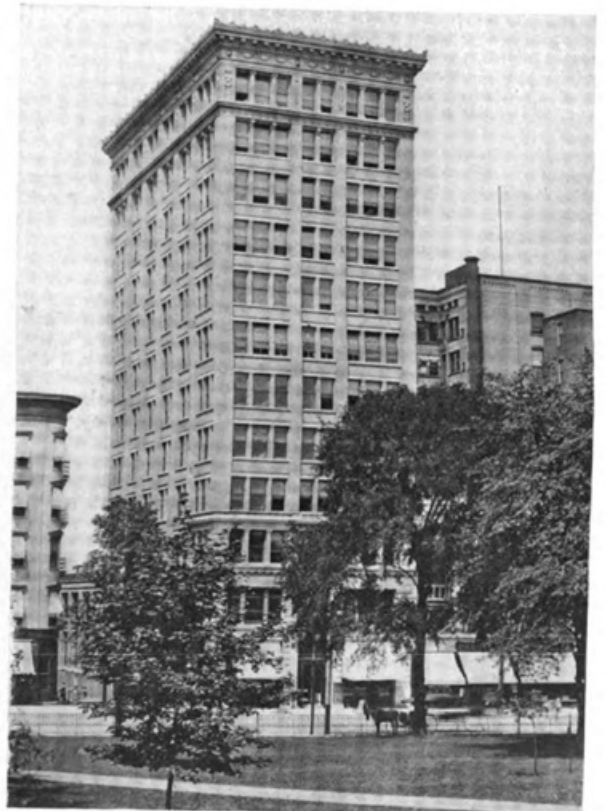
COLUMBUS POSTOFFICE



COLUMBUS COUNTRY CLUB



THE COURT HOUSE, COLUMBUS



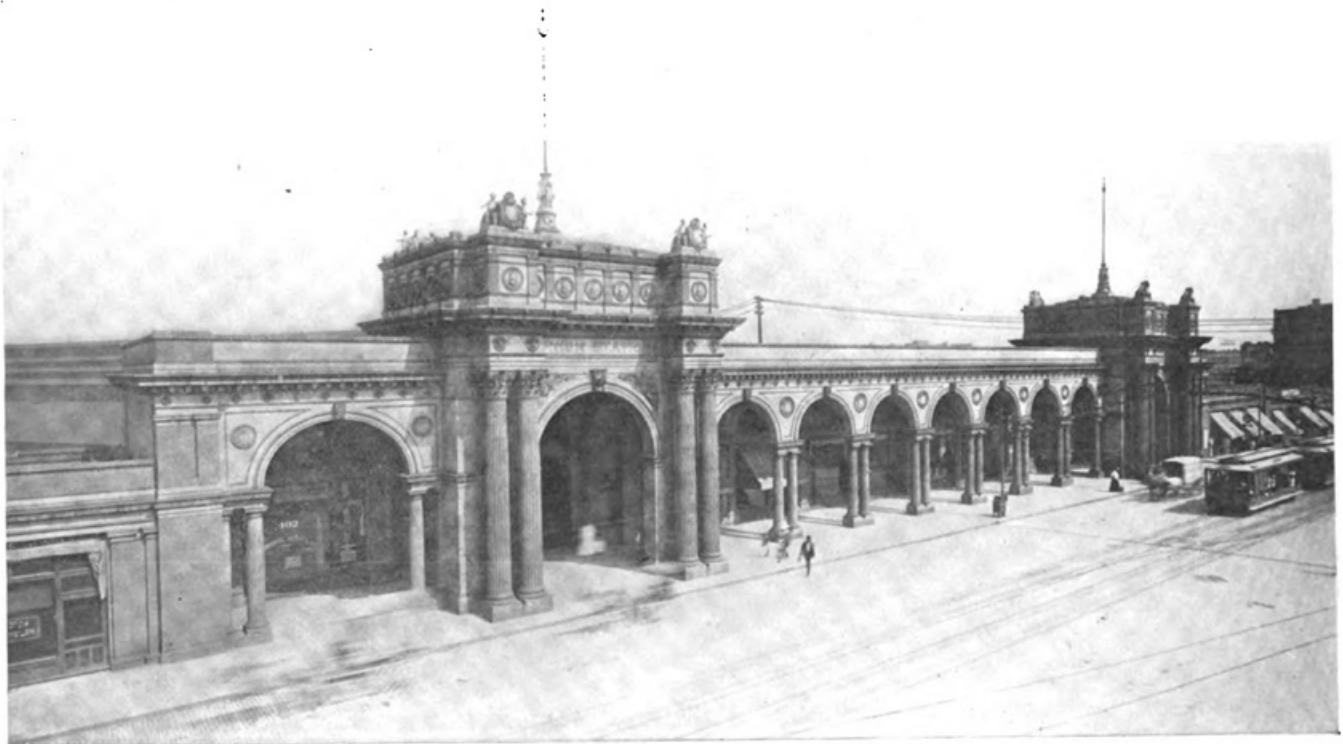
HARRISON BUILDING, COLUMBUS, ONE OF THE CITY'S SKYSCRAPERS



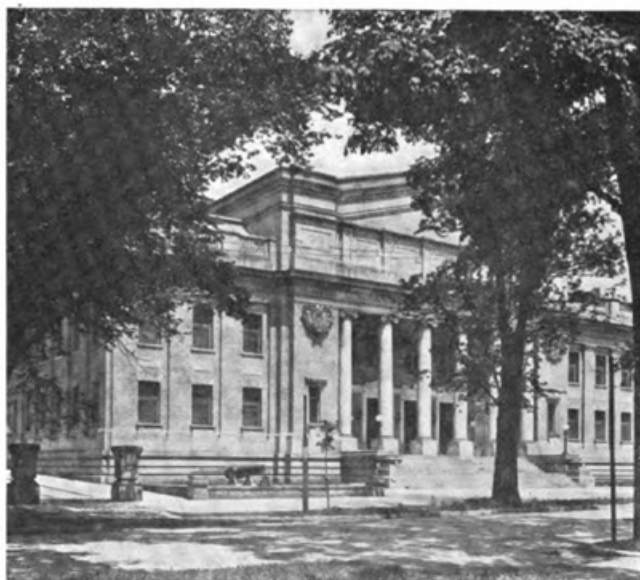
INSTITUTION FOR THE FEEBLE MINDED, COLUMBUS



BROAD STREET, COLUMBUS, LOOKING EAST—BROAD STREET PRESENTS A 7-MILE STRETCH OF ASPHALTED BOULEVARD



ENTRANCE TO UNION STATION, COLUMBUS



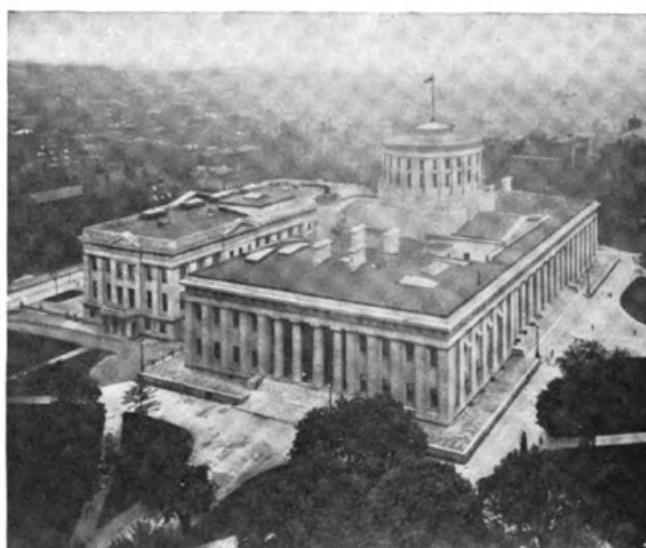
FRANKLIN COUNTY MEMORIAL HALL, COLUMBUS



THE EMPIRE, ONE OF THE ATTRACTIVE COLUMBUS THEATERS



COLUMBUS CITY CLUB



BIRD'S-EYE VIEW OF THE STATE CAPITOL AT COLUMBUS



ADMINISTRATION BUILDING, OHIO STATE UNIVERSITY, AT COLUMBUS



THE "ARMORY" OR GYMNASIUM, OHIO STATE UNIVERSITY



SCIOTO RIVER AND BIRD'S-EYE VIEW OF COLUMBUS, LOOKING SOUTH, WIRELESS TELEGRAPH STATION SHOWN AT LEFT



COLUMBUS SAVINGS & TRUST BUILDING



OFFICES OF THE COLUMBUS RAILWAY & LIGHT COMPANY ON HIGH STREET